

# Insight & Impact

April 2025



# Monthly Overview



We published 4 new reports:

- [Perinatal Mental Health](#)
- [Listening Survey](#)
- [Enter and View visit to Keele Practice](#)
- [Enter and View visit to Orchard Surgery](#)



Click the report title to view.

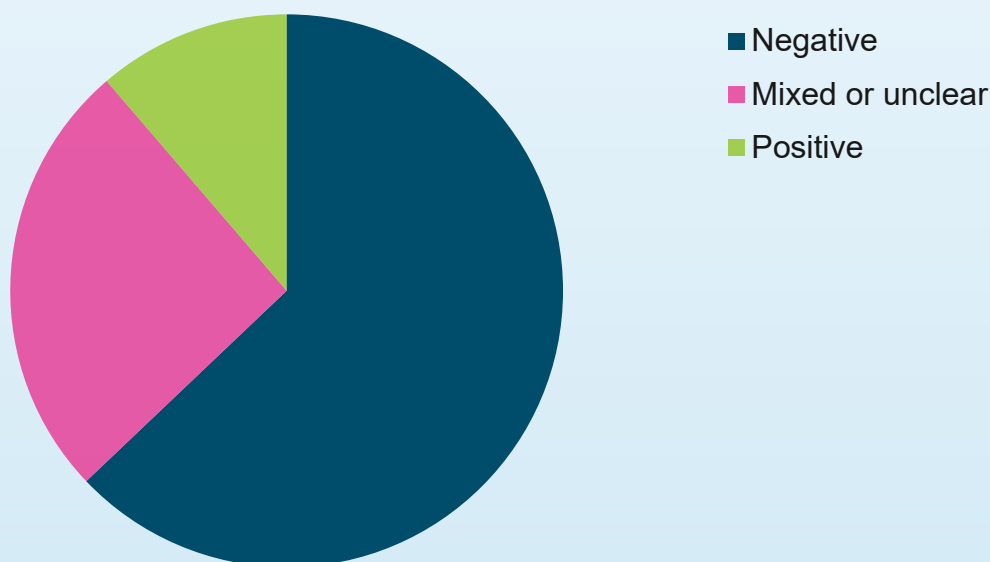
We attended local PPGs, The Bread and Butter Thing, Parkinson's 100 event, OLGBT+ Social, The Restoration Shack, and various local Community Lounges, including the PEGiS (Parent Engagement Group in Stoke) SEND (Special Education Needs and Disabilities) Community Lounge.

Through our public engagement, both in-person and online we reached an approximate total of 1500 people in April 2025.



# Intelligence Summary

This data demonstrates the full total of 62 intelligence received.



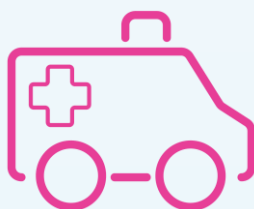
Most of the feedback we received this month was of a negative sentiment.

## Key Themes

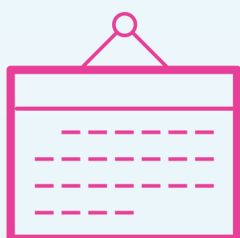
The stories shared typically had themes of...



Medication,  
prescriptions, and  
dispensing



Parking and  
transport



Booking  
appointments



Consent, choice,  
user involvement,  
and being listened  
to

# Top 3 Services

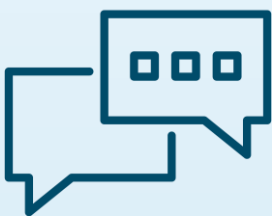
Of the stories shared, we heard the most about...



GPs



Hospital



Other

The sentiments of feedback varied for each of the top 3 service types.



# Coming up...

During our last Independent Strategic Advisory Board meeting, our members approved our next priorities for 2025/26. Those priorities are:

- Access to CAMHS' Autism and ADHD assessments
- Inconsistencies of accessing different levels of mental health support services for adults
- Lack of services and support for adults after being diagnosed with ADHD and/or Autism.

We have also agreed to a continued focus on our volunteers, community outreach, and our 'Enter and View' programme. Read the findings in our [Listening Survey report](#) to find out more behind the work programme.



**Looking to join us in person?**

Keep an eye out on our website for all future events.

# healthwatch

## Stoke on Trent

Healthwatch Stoke-on-Trent  
Commerce House  
Festival Park  
Stoke-on-Trent  
ST1 5BE

[www.healthwatchstokeontrent.co.uk](http://www.healthwatchstokeontrent.co.uk)

t: 03303 130 247

e: [info@healthwatchstoke.co.uk](mailto:info@healthwatchstoke.co.uk)

✕ @HealthwatchSoT

f [Facebook.com/HealthwatchStoke](https://www.facebook.com/HealthwatchStoke)



**Committed  
to quality**

We are committed to the quality of our information.  
Every three years we perform an in-depth audit so  
that we can be certain of this.



**Engaging  
Communities  
Solutions**

[www.weareecs.co.uk](http://www.weareecs.co.uk)

t: 01785 887809

e: [contactus@weareecs.co.uk](mailto:contactus@weareecs.co.uk)

✕ @EcsEngaging

The contract to provide the Healthwatch Stoke-on-Trent service is held by Engaging Communities Solutions C.I.C.